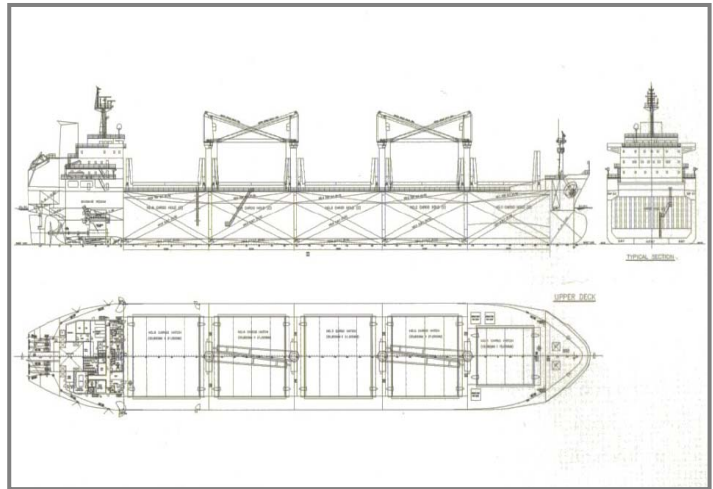


**MV Deval Tbn-1**

Dwt : 30,700  
 Built : November 2010, Tsuji - China  
 Type : Trader Type - Double Hull  
       Single Deck Bulk Carrier  
 Class : A.B.S.  
 Imo No. : na  
 Call Sign : na  
 P+I Club : na  
 Fomer Names : na  
 Gross Tonnage : 20,000  
 Net Tonnage : 10,500  
 L.O.A. : 178,76 m  
 Breadth Moulded : 28,06 m  
 Depth Moulded : 14,00 m  
 Light Weight : 7,000 mts  
 Draft : 9,82 m  
 Ho/Ha : 5/5  
 Main Engine : MAN B&W 6S42MC  
 Hatch Covers : Hydraulic end Folding Type  
 Cargo Ventilation: Natural  
 Australian Ledder: Fitted  
 Cranes : 4 x 30 mts  
 Grabs : 4 x 12 cbm Radio Controlled  
 Speed : Abt 14,0 Knots  
 Consumption : Abt 24,50 mts ifo 380 cst and nil Mdo at Sea  
                   Abt 3,00 mts ifo at Port or Idle



For more details, please contact our chartering brokers on:  
 Email: [levent@leventshipping.com](mailto:levent@leventshipping.com)  
 Tel: +90 216 651 0126/27

**Hold/Hatch Dimentions & Cubic Breakdown:**

Ho.No.	Length	Grain/Bale	Hatch Sizes
1	26,40 m	214,154/201,053 cbft	16,60 x 15,00 m
2	25,60 m	306,022/300,054 cbft	20,80 x 21,00 m
3	27,20 m	324,519/316,778 cbft	20,80 x 21,00 m
4	26,40 m	315,846/308,416 cbft	20,80 x 21,00 m
5	27,20 m	286,419/272,707 cbft	20,80 x 21,00 m

Total Grain/Bale: 1,446,962/1,399,010 cbft

The Speed and Consumption are given basis max Beaufort 4 and Douglas Sea State 3. The vessel has the liberty to use 'Mdo' when manouvering in/out of ports or in narrow/shallow waters, and starting up/turning off engine.

All details are about and without any guarantee.